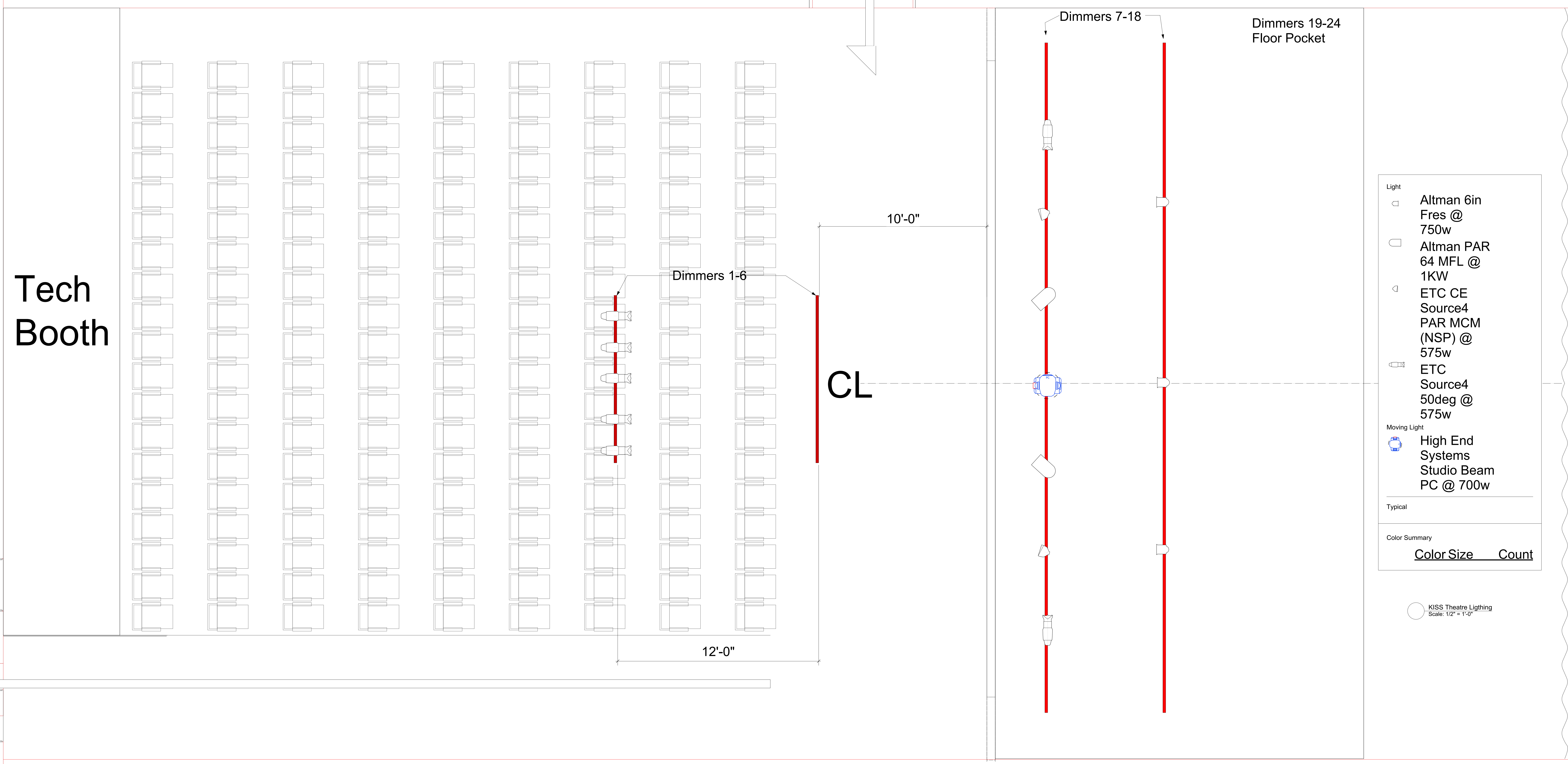


From Lobby

Tech Booth

Rehears



Light

- Altman 6in Fres @ 750w
- Altman PAR 64 MFL @ 1KW
- ◁ ETC CE Source4 PAR MCM (NSP) @ 575w
- ◁ ETC Source4 50deg @ 575w

Moving Light

- ⊕ High End Systems Studio Beam PC @ 700w

Typical

Color	Size	Count

KISS Theatre Lighting
Scale: 1/2" = 1'-0"